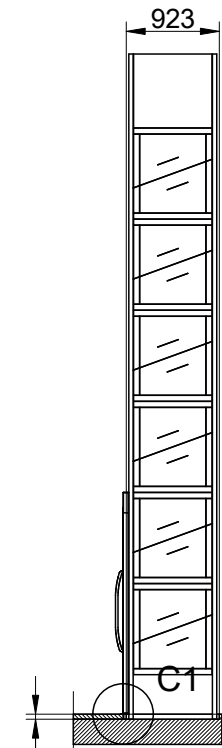
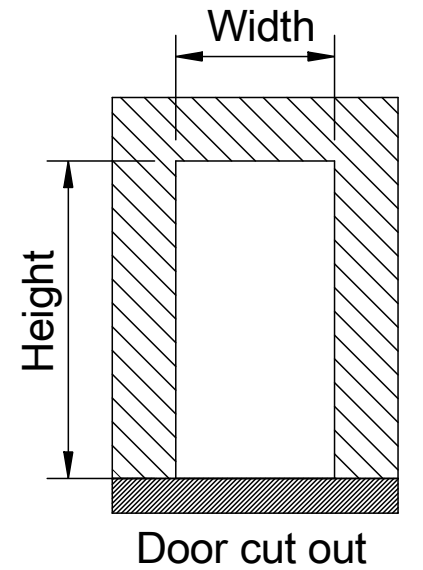


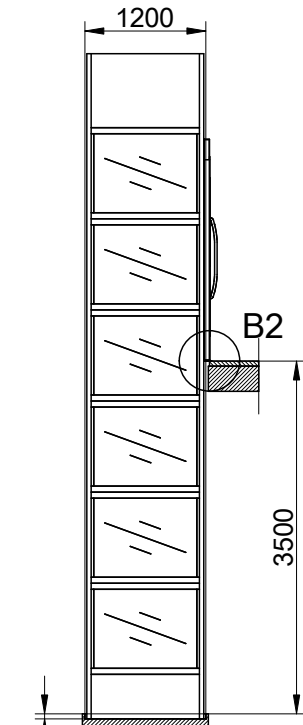
Shaft cutout sizes

Clear space required for lift unit not in a shaft by others

| Door front cutout sizes | | |
|-------------------------|-------|--------|
| Landing | Width | Height |
| B 2 | 923 | 2250 |
| C 1 | 1200 | 2250 |

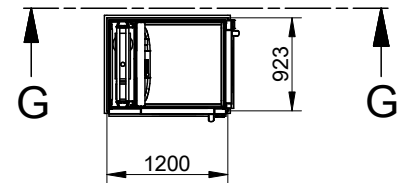
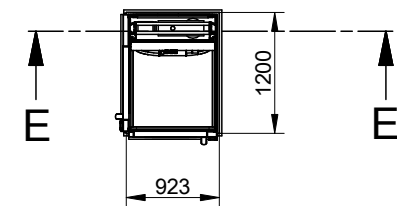


Section E-E



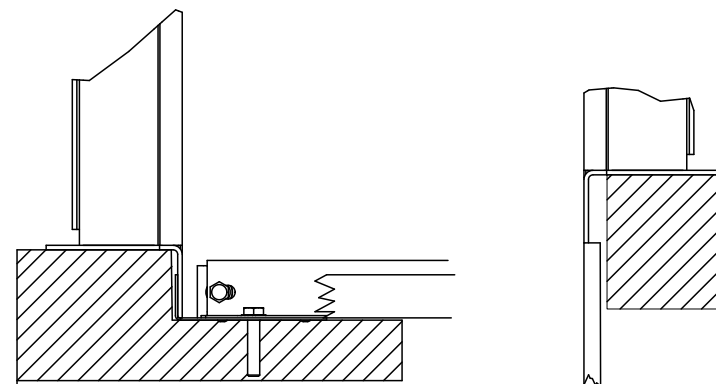
Section G-G

50 mm pit depth + 10 mm, - 0 mm.
Bottom surface must be flat



C1 (1:5)

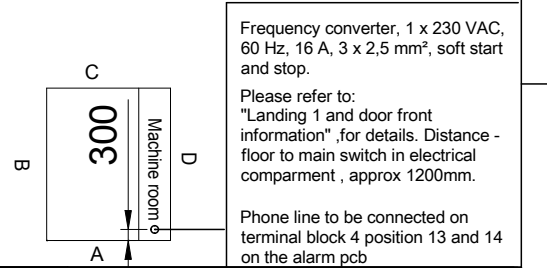
B2 (1:5)



Incoming power supply is connected at landing: 1, side A

The following signals may be forwarded from the lift:
-Emergency signal: On the alarm pcb, the circuit between position 1 and position 2 on terminal board 4, is closed when the yellow alarm button is activated for 10 seconds.

-Summary alarm: Any operational errors (8 different) can be forwarded to a local alarm central or reception from terminal board 3, spaces 14 (N.C.), 15 (N.O.) and 16 (COM) on the alarm pcb.



Approved by builder:

European view placement:



Tender no
122634-W

Order no

Gen. Tolerances
SS-ISO 27681-1 m

Principal drawing
A4000 - 800*830
Cut out sizes
A4000 2 STOPS PASEO
MAGALLANES

Date
2015-07-06

sheet
2 of 6

Scale:
A3, 1:60